

# SEM510/512 Soil Compactor



**SEM510**  
**SEM512**

- **High Reliability:** Hydrostatic drive system with world class variable displacement piston pump and motors delivers leading in class reliability
- **High Productivity:** Dual amplitude and frequency vibration system enable the operator to achieve better compaction result
- **High Efficiency:** Up to 45% grade ability allows the machine to work efficiently on slop and uneven terrains

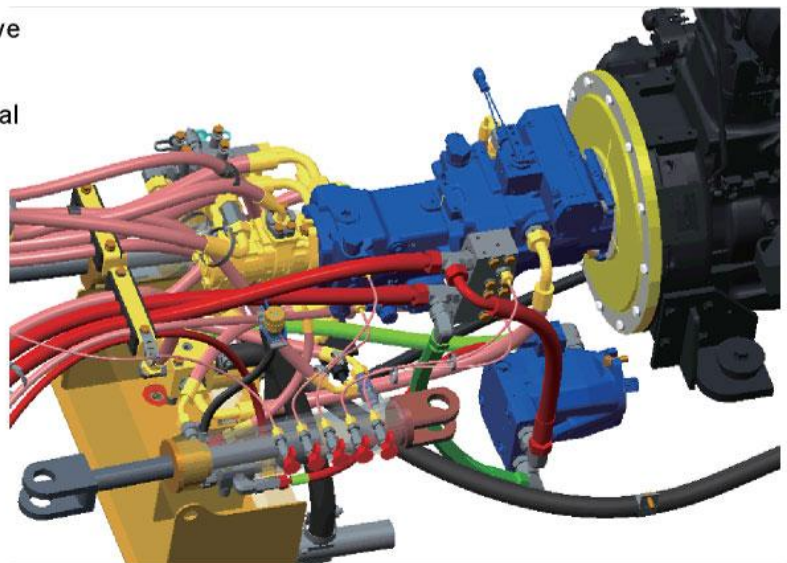
## Engine

- Weichai WP4 engine with turbo charger and ATAAC
- High fuel efficiency



## Drive Train

- Hydrostatics drive with rear axle and drum drive
- High performance coupler
- Heavy duty rear axle with limited slip differential





## Hydraulic System

- Improves efficiency by 20% vs. open center system
- Reduces oil contamination, extends life of hydraulic system
- Maintains higher system pressure with less energy loss
- Allows for simpler hose routings
- Requires smaller volume hydraulic tank, reduces maintenance cost



## Cooling System

- Modular cooling package design
- Up to 49°C ambient temperature cooling capacity



## Key Applications

SEM510 and SEM512 SCOM are widely used in road work, sub-base, parking lots, site development, water and sewer trench work, hills and uneven terrain

## Cab & Operation System

- Canopy standard, Cabin + A/C optional
- Big room, superior front, side and rear visibility
- SEM512/510 is hydrostatic compactor. The operation system is very simple, it just has two control levers, one for throttle control, another one is for forward/backward and brake control
- A/C with interior cycle/out side fresh air cycle selection for better defog capability
- Safety belt is standard

## Optional Accessories

Configuration (O=Optional)	SEM510	SEM512
Soft CAB+AC	O	O
Compaction meter	O	O
Cold Start (Air Inlet Heater, -20C)	O	O
Rear rain wiper(Cab Only)	O	O
Radio (AM, FM) (Cab Only)	O	O
Pad Foot Shell Kit	O	O

## Specifications

Items	Unit	SEM510	SEM512
<b>Engine Specification</b>			
Emission		China Stagell	China Stagell
Std Rated Power-Gross	kW	97.5	97.5
Rated Speed	r/min	2,200	2,200
Composite Work Cycle Fuel Consumption (l/hour)	N.m/rpm	560/1,400-1,600	560/1,400-1,600
Ambient Capability-STD Sea Level	Deg C		
Ambient Capability-HA Sea Level	Deg C	49	49
Ambient Capability-Cold Weather	Deg C	-10	-10
<b>Operating Specifications</b>			
Machine Mass w/Std Config	kg	10,000+3%	12,000+3%
Weight at Drum w/Std Config	kg	5,900+3%	6,900+3%
Weight on Rear Axle	kg	4,100	5,100
Static Linear Load	N/cm	217	317
Max. Grade Ability w/o vibration	%	45	45
Articulated Angle	°	33±1	33±1
Turning Radius Inside Drum Edge	mm	5,990	5,990
Compaction Width	mm	2,130	2,130
<b>Travel Speed</b>			
Lo Range	km/h	0 to 5.5	0 to 5.5
Hi Range	km/h	0 to 12	0 to 12
<b>Hydraulic Cycle Time</b>			
Full Turn Time	s	6±0.5	6±0.5
<b>Vibratory System</b>			
Frequency-Hi/Lo	HZ	33/30	33/30
Amplitude-Hi/Lo	mm	0.90/1.80	0.90/1.80
Centrifugal Force-Hi/Lo	kN	130/215	150/245
<b>Dimensions</b>			
Machine Dimensions[L*W*H]	mm	5,815*2,290*3,130	5,815*2,290*3,130
Oscillation Angle	°	10±1	10±1
Wheelbase	mm	2,900	2,900
Tread Width	mm	1,600	1,600
Drum Width	mm	2,130	2,130
Drum Diameter	mm	1,590	1,600
<b>Tire Specs</b>			
		23.1-26 12PR12	23.1-26 12PR12
Tire Pressure Setting	Mpa	0.35	0.35

Caterpillar (Qingzhou) Ltd. Address: No.12999 Nanhuan Road,Caterpillar Industrial Park, Qingzhou City,Shandong Province, Zip Code: 262500 P.R.China

© Materials and specifications are subject to change without notice. Featured machines in photos may include optional equipment. See your SEM dealer for available options.

© 2017 Caterpillar (Qingzhou) Ltd. All Rights Reserved. SEM Machinery, SEM, their respective logos, trade dress as well as corporate and product identity used herein, are trademarks of Caterpillar (Qingzhou) Ltd. and may not be used without permission.

Version: November 2017